

SHARK COMPACTOR MK7 & PACKER HEAD SOLUTIONS



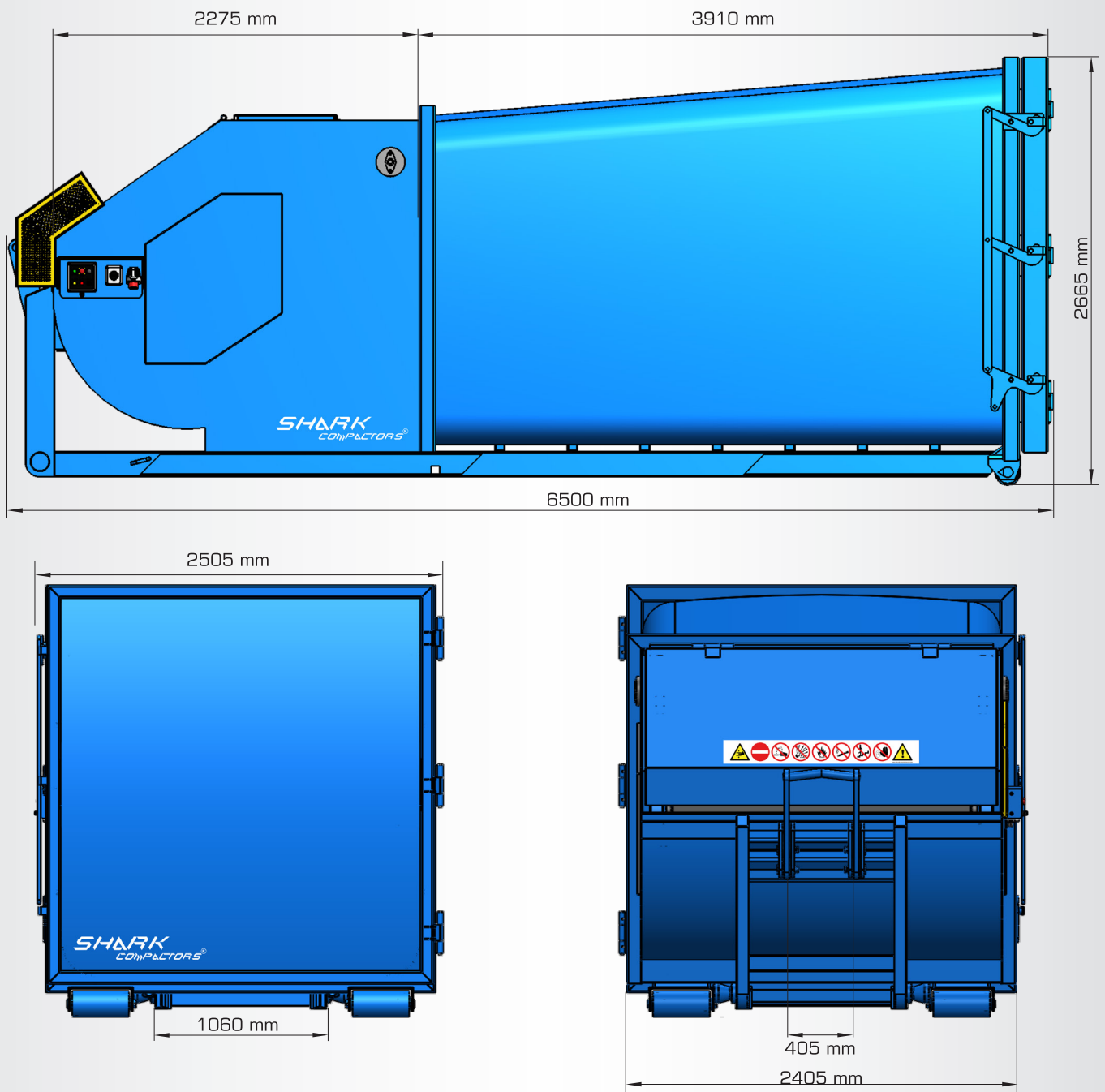
SHARK CONTAINER TYPE MK7 GENERAL DESCRIPTION

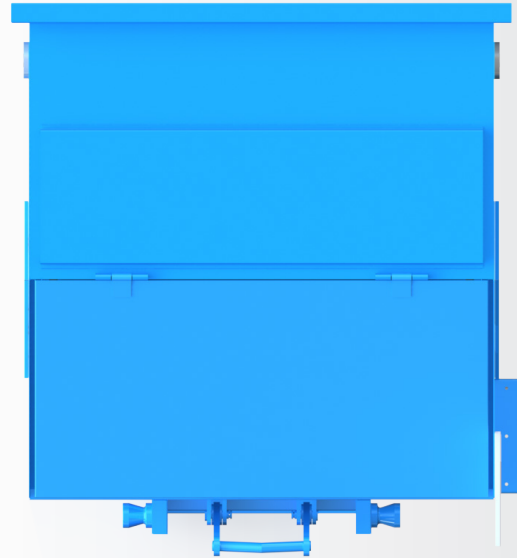
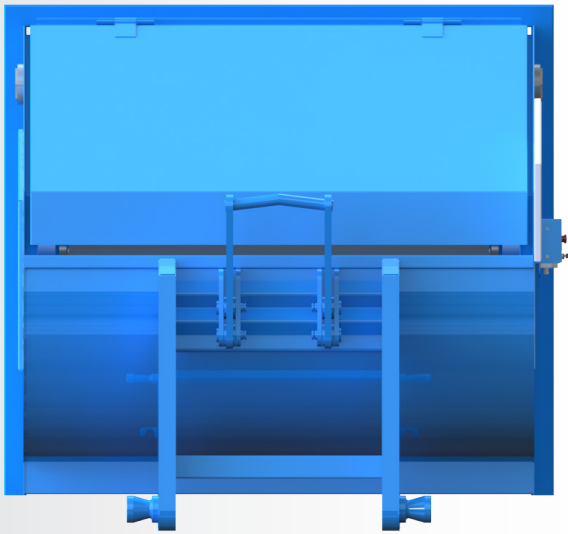
Shark MK7 is a long life product which constructed with elegant condition. Shark compactor is a self cleaning product & it does not need cleaning procedures like traditional compactors. Shark Containers, aims to be an ideal product for the companies who are doing their services for the recycling business & it is a product that does not require daily maintenance except the pre-operation safety controls.

Shark Compactors has ability to compress many different kind of wastes like domestic wastes, wet wastes, plastics, hospital wastes (without blood contacted), food wastes, wood, metal, cartoon, paper & equal materials without any extra power except 380 V. electricity to make it run.

Shark Containers are user-friendly products that can be transported from waste collection centers to recycling or disposal facilities using by truck mounted hooklift, and waste materials can be unloaded by truck mounted hooklift. The Shark Compactors MK7 a product already patented & works with a patent registered compaction system.

Shark MK7 comes with a 1,5 m³ packer head (loading chamber) and high compression capacity which is mean its the focal point of the search for strengthening the business economy, it is also minimizes the fuel costs, extra overwork expenses & reduces worktime of the enterprises.

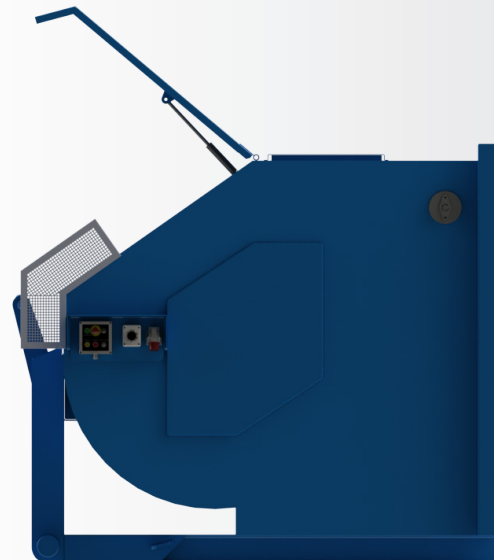




SHARK COMPACTOR MK7 PACKER HEAD

Shark MK7 packer head (loading chamber) may be combined with desired body types as well as its original body. Packer head solution is an option for suitable recycling areas to use with different kinds of frame options.

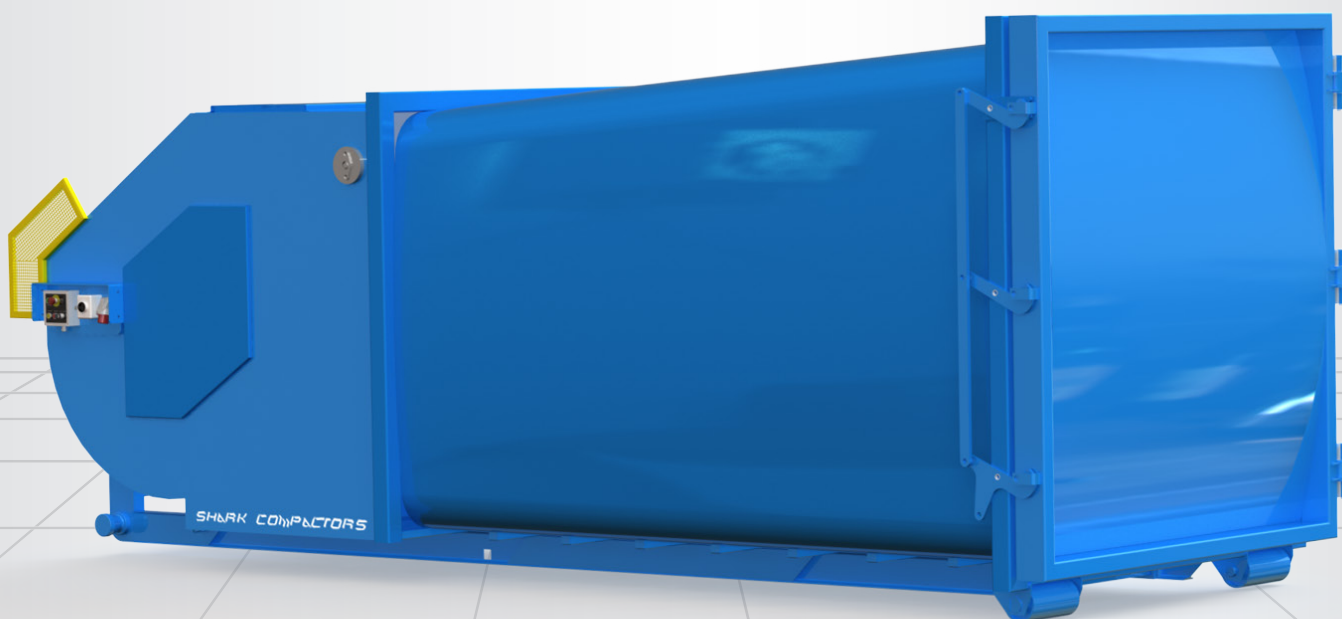
This user-friendly product has all necessary certifications & safety regulations. The main purpose of providing this packer head solution is to provide new options & possibilities for the market.



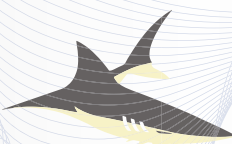
SHARK CONTAINER MK7 OPTIONAL EQUIPMENTS & ACCESSORIES

1. Front rollers
2. Front & rear casters
3. Loading chamber protection grids
4. Remote controller
5. Service doors safety sensors
6. Backdoor lifting hook
7. Flashing beacon

MK7 CHARACTERISTICS	MK7 TECHNICAL INFORMATIONS
Total Body Volume	Up to 24 m ³
Loading Chamber	1,5 m ³
Driven By	380 V. Electricity (3x400V + 50Hz 16A)
Engine Power	5,5 kW
Maximum Hydraulic System Pressure	230 Bar
Compression Pressure	30 Ton
Loading Chamber Working Cycle	N/A
Compression Cycle	Between 25 - 40 Second
Working Type	PLC Supported Hydraulic Power Unit
Empty Weight	3500 kg.



PATENT ISSUED BY



SHARK
COMPACTORS®



✦ Nørregade 26 4534 Hørve / Denmark
☎ +45 70 70 72 00
@ info@shark-containers.com
🌐 www.shark-containers.com